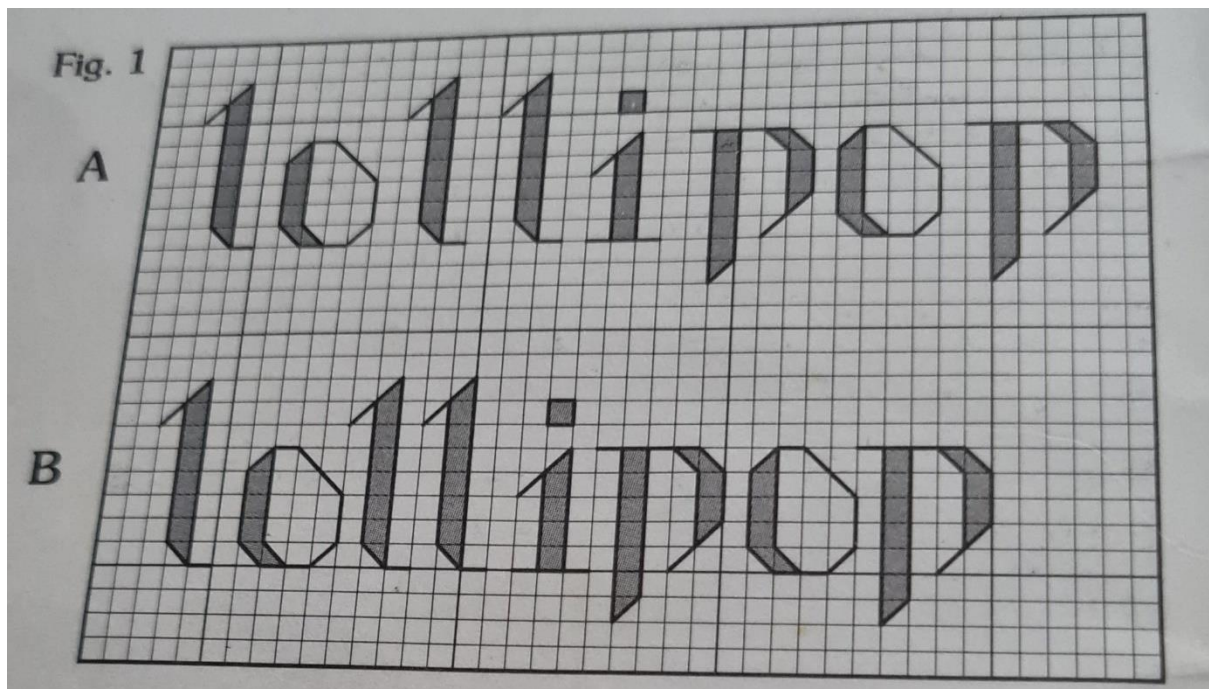


Alphabets

Working with alphabets is very interesting because you can personalize your cross-stitches with names, verses or quotation for your home and office. Personally I enjoyed cross stitching with alphabets for bags, albums and wedding albums, key chains and etc.

Charting is the next important step because it will enable you to arrange words and phrases, to adjust spacing between words and letters, and to find the dimensions and center of your design. After you have chosen your alphabets, photocopy one of the reproducible grids. Draw the letters in your project on the copy. Cut letters apart and position on grid page in leaflet.

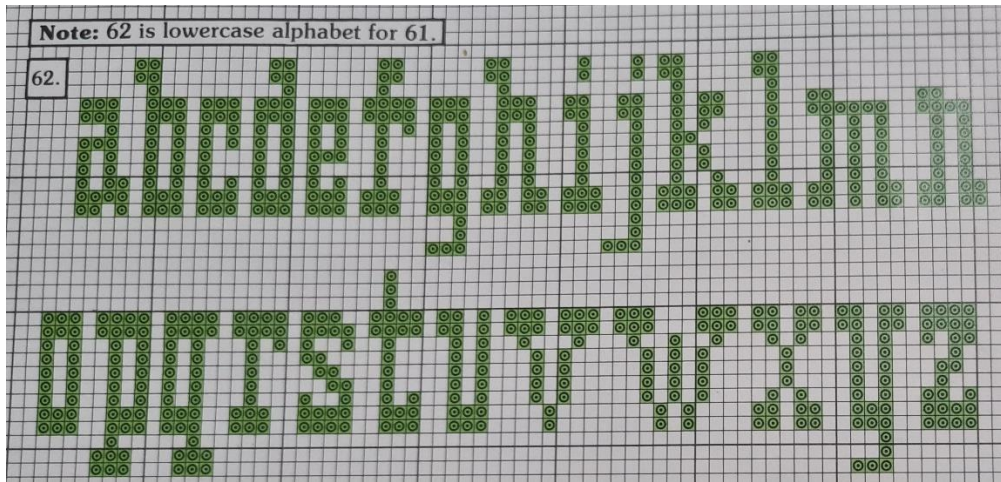
There is no right or wrong spacing between letters, words, and rows; you should arrange the letters in a manner that is pleasing to you. Leaving one space between letters of a word and three to four spaces between words and lines is a good beginning point. When using lowercase letters, allow for extra space between rows for ascending and descending letters (b, d, f, g, h, j, k, l, p, t, and y). In some cases, an equal number of spaces between every letter will not create a balanced look. This usually happens when several “skinny” letters, such as l’s and i’s to be side by side. In Fig. 1, note that the spacing between letters is equal in example A, but is more appealing in example B. When you find an attractive arrangement, secure letters with removable tape. Now you’re ready to figure the stitch count of your design and mark your center point.



How to choose floss colors for my project?

Many of the alphabets don't have a color key. Choosing floss colors is a matter of personal preference. Many of the alphabets in this leaflet do not have color keys so that you can coordinate the colors in your project. It is often helpful to gather all of the floss colors you plan to use and lay them on the fabric or item to be stitched. Consider where you are going to place the finished project. If the project is going in a particular room, match your

floss to the room's colors, Try not to mix very bright colors with dull colors. For example , if you are stitching a project using bright colors, don't use country blue with bright red, yellow, and green. Some projects require more that one shade of a color. Ensure your shades of floss blend well together.



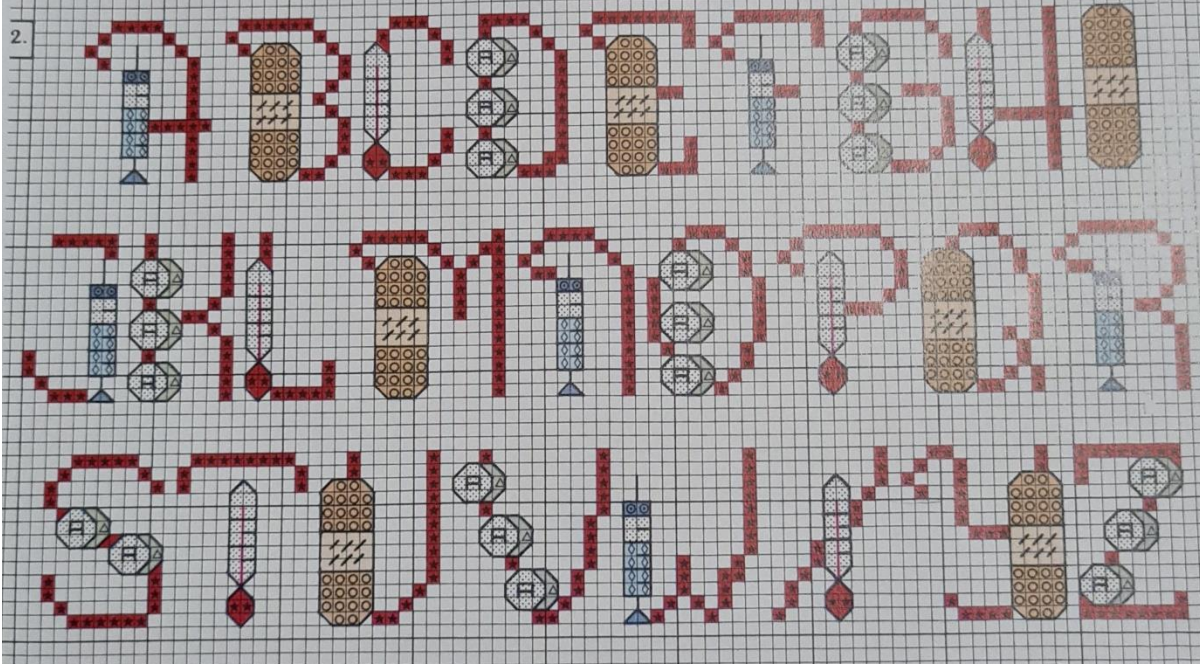
X	DMC	¼X	B*ST	ANC.	COLOR	X	DMC	¼X	B*ST	ANC.	COLOR	X	DMC	¼X	ANC.	COLOR
	310		403		black	■	817		13		dk red	■	3011		846	green
■	349	■	13		red	■	829		906		dk gold	■	3012		844	lt green
●	351		10		lt red	■	935		861		dk green	■	3013		842	vy lt green
■	815		43		maroon	■	948		1011		pink	■	3045		888	gold

81.



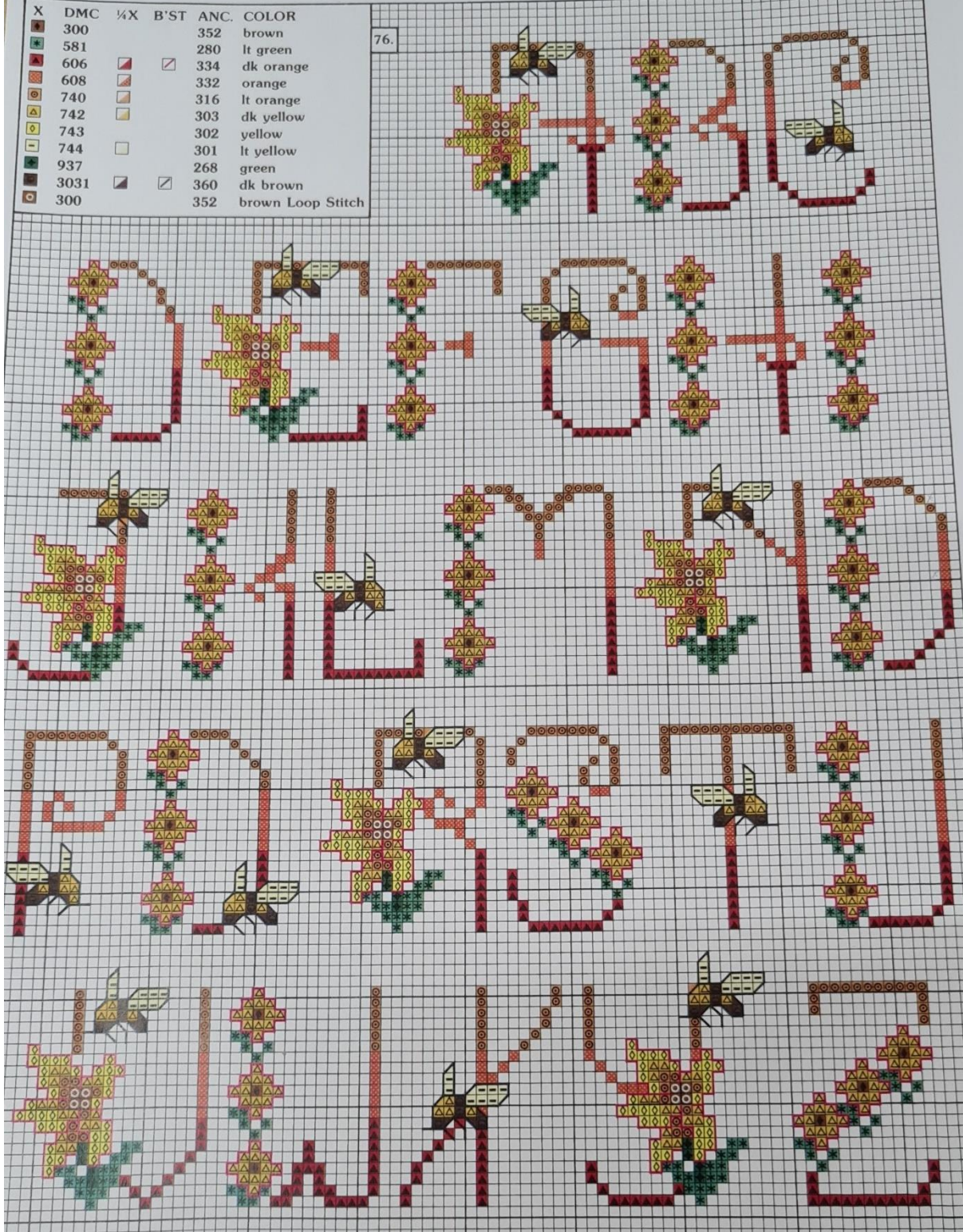


X	DMC	¼X	B'ST	ANC.	COLOR	X	DMC	¼X	B'ST	ANC.	COLOR
	blanc		2	white		758		882	dk peach		
	318		399	grey		775		128	blue		
	644		830	beige		3031		360	brown		
	666		46	red	* Use 2 strands of floss.						
	754		1012	peach							



X	DMC	¼X	B'ST	ANC.	COLOR
■	300			352	brown
■	581			280	lt green
■	606	■	□	334	dk orange
■	608	■	□	332	orange
■	740	■	□	316	lt orange
▲	742	■	□	303	dk yellow
▲	743	■	□	302	yellow
■	744	■	□	301	lt yellow
■	937			268	green
■	3031	■	□	360	dk brown
○	300			352	brown Loop Stitch

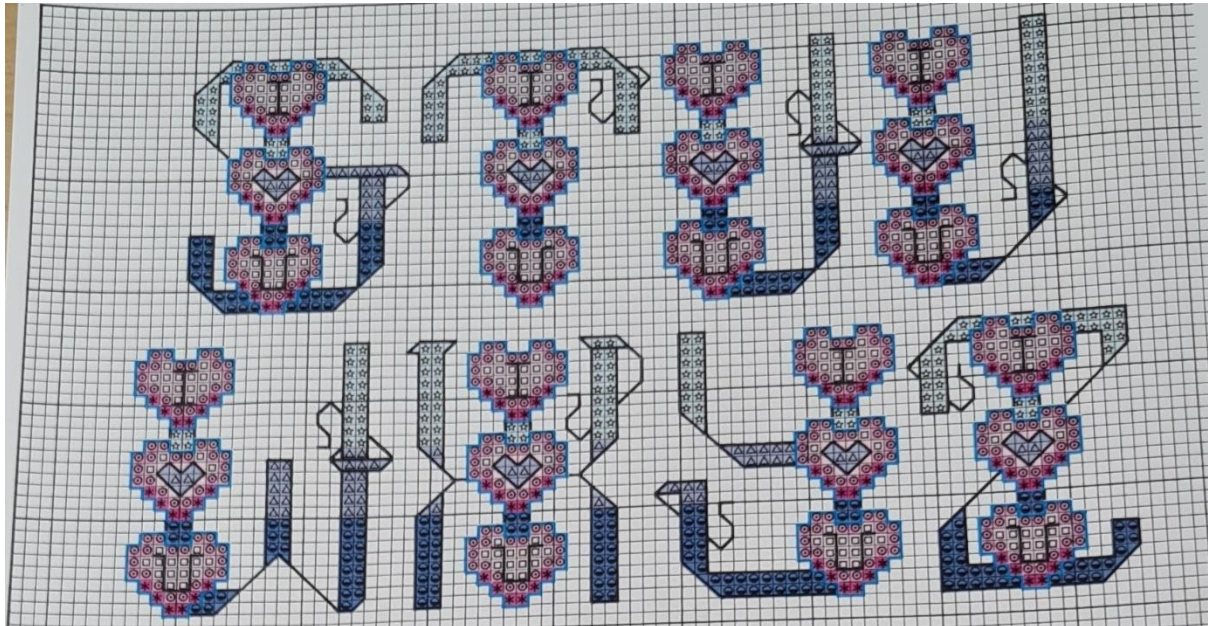
76.



X	DMC	¼X	B'ST	ANC.	COLOR	X	DMC	¼X	ANC.	COLOR
△	309		42		dk pink	⊙	826		161	blue
□	813	■	161		lt blue	☆	827	□	160	vy lt blue
◇	818	□	23		vy lt pink	⊛	899		52	pink
	824	▤	164		dk blue	⊕	3326		36	lt pink

8.



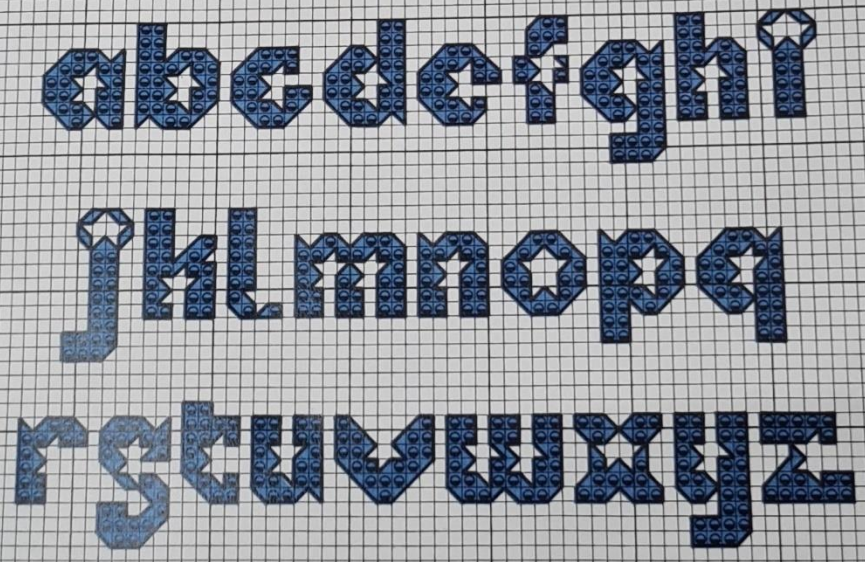


59.

abcdefghijklmnopqrstuvwxyz

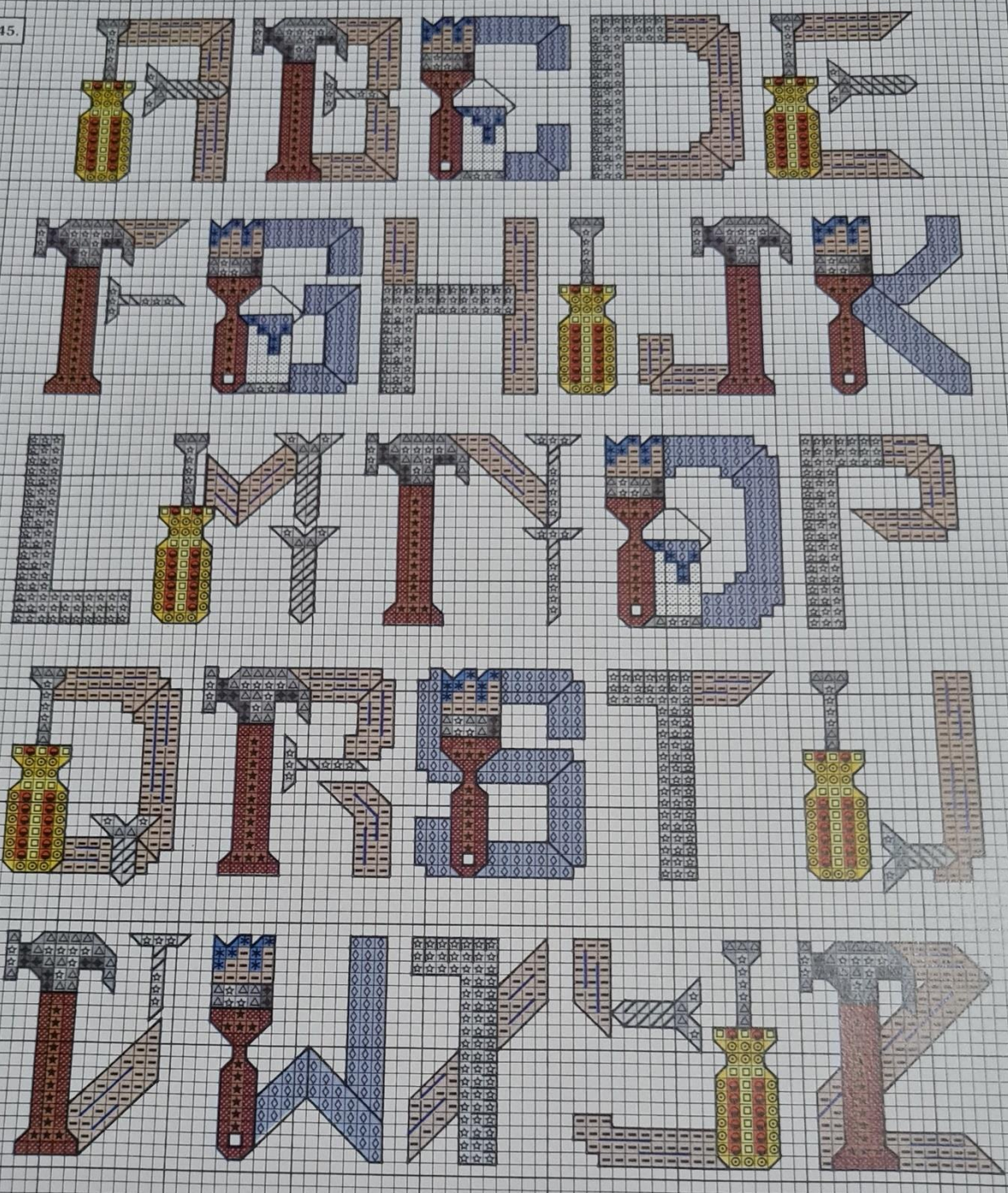
X	DMC	¼X	B'ST	ANC.	COLOR
■	312	■		979	blue
◻	336	◻	150		dk blue

60.



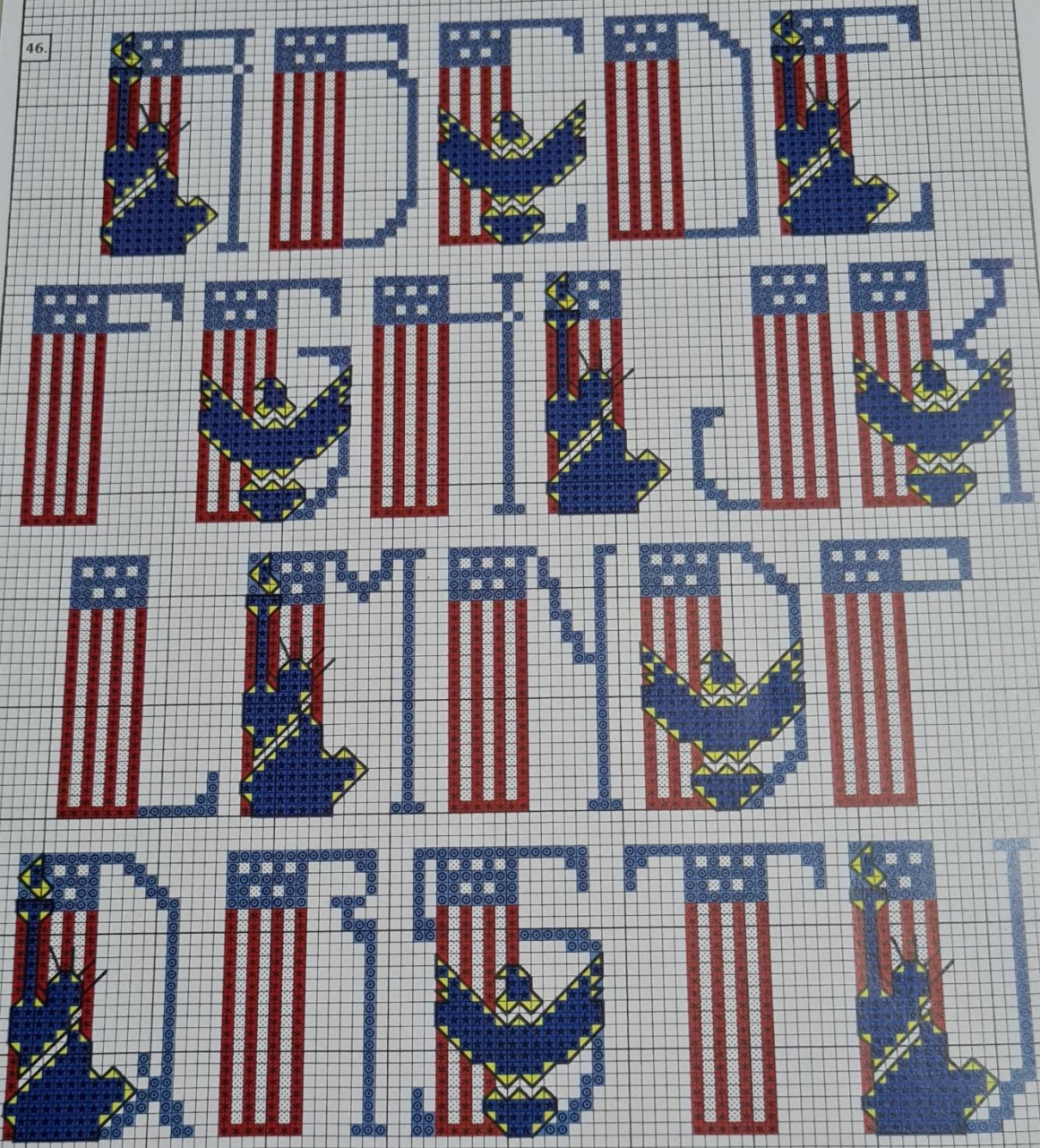
X	DMC	¼X	B'ST	ANC.	COLOR	X	DMC	¼X	ANC.	COLOR	X	DMC	¼X	B'ST	ANC.	COLOR
■	blanc			2	white	■	436		1045	brown	■	762			234	lt grey
■	318	■		399	dk grey	■	437	■	362	lt brown	■	3031	■	360	vy dk brown	
■	322	■		978	dk blue	■	740	■	316	orange	■	3755	■	140	blue	
■	415	■		398	grey	■	743	■	302	yellow						
■	433	■	■	358	dk brown	■	745	■	300	lt yellow						

45.



X	DMC	¼X	¾X	B'ST	ANC.	COLOR
☐	blanc	☐		2		white
●	312	■		979		lt navy blue
■	349	■		13		red
■	939	■	■	152		navy blue

46.





Information taken from Carol E. (1994). 120 Alphabets: Book 2. Leisure Arts, Inc., P.O. Box 55595, Little Rock, AR 72215